

### ARAÇ TİPİ

635 FE - 515 FE - 519 FE - FE 534 - FE 544 - FB 634 - FE  
639 C - 839 - 859 G FE130C1 CANTER 2.0 SUPER LOW  
MITSUBISHI (739)

### ANA ŞANZİMAN TİPİ

MO 25 S 5 / 27 S 5

Kozmaksan Isuzu PTO ları Isuzu araçları için tasarlanmıştır.

Kozmaksan Isuzu PTO ları tek çıkış modeline,yan bağlantı tipi opsiyonlarına sahiptir.

Opsiyonlar ;  
UNI&ISO&Kaplin Bağlantısı  
Kontrol Tipi ;

Mekanik&Vacuum  
Uygulamalar;

Çöp Araçları  
Vinç Araçları  
Damper Araçları  
Çeki Araçları

ARAÇ TİPİ MITSUBISHI MEKANİK KONTROL SOL YAN BAĞLANTI

MTS.01.25S5.M

Ürün Kodu

ŞANZİMAN TİPİ MO 25 S 5 / 27 S 5

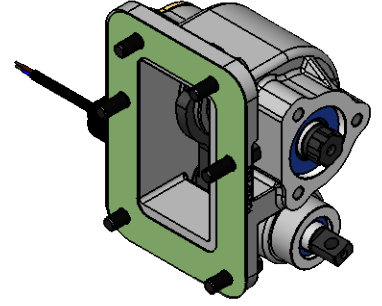
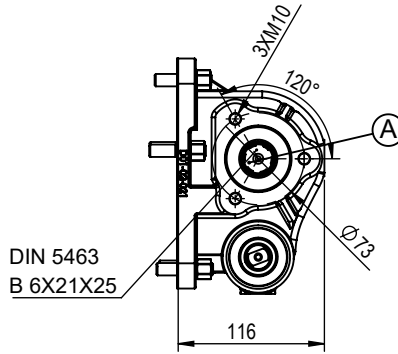
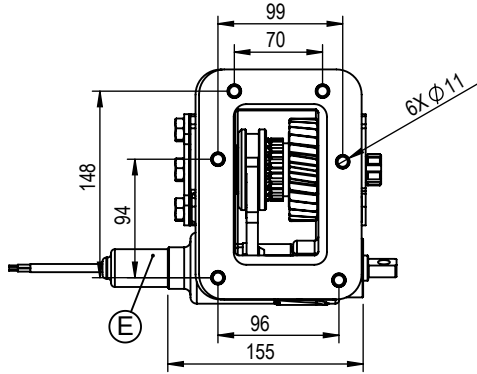
02

15.02.2018

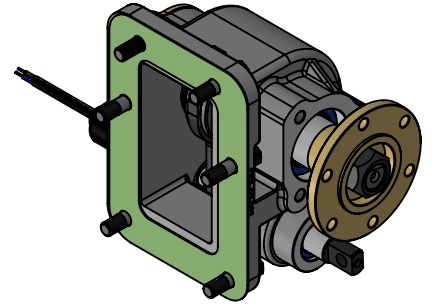
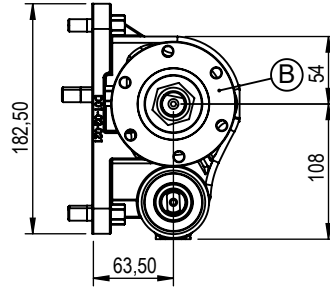
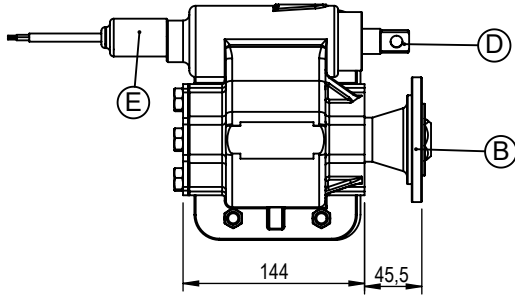
03

Rev.Nu-Tarih  
-Sayfa Nu.

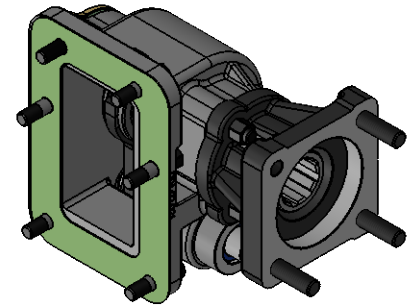
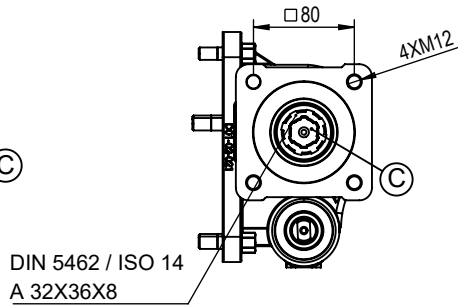
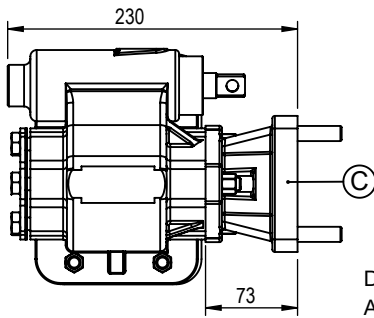
### UNI POMPA ÇIKIŞLI



### FLANŞLI POMPA ÇIKIŞLI



### ISO POMPA ÇIKIŞLI



**A** DIN 5463 6X21X25 UNI 3 Delikli Bağlantı Çıkışı

**B** ISO 7647-7646 Standartlarda Kaplin Çıkışı

**C** ISO 14 - DIN 5462 8X32X36 Bağlantı Çıkışı

**D** Mekanik Sistem

**E** Devrede Devrede Değil Müşiri

	UNI ÇIKIŞ	KAPLİN ÇIKIŞ	ISO ÇIKIŞ
Güç @1000d/dk (kW)	23	36,7	23
Azami Tork (Nm)	220	350	220
Ağırlık (Kg)	6	8	7
Pto İç Oran (i=Zout/Zin)		1/1	
Motordan Pto Oran		1:0,47	
Bağlantı Şekli	Sol Yan		
Dönüş Yönü	Sağ (Saat Yönü)		

- Kozmaksan Şirketi katalogta verilen bilgileri önceden bildirmeden değiştirme hakkını saklı tutar. Bu belge genel bilgiler içerir ve taahhüt ve sözleşme niteliğinde değildir.  
- Verilen güç ve tork bilgileri sadece PTO'ara şanzımana aittir. Uygulama yapılacak şanzıman, motor ve aracın PTO'ara şanzıman için uygun görüldüğü değerleri aşmayınız.  
- Şanzımana civata ile bağlanan PTO'lara takılacak pompa, şaft vb. parçaların ağırlık ve askıda kalan uzunlukları şanzıman ve araç üreticisinin onayladığı limitleri geçmemelidir.

KozmaksanPTO



kozmaksanpto



kozmaksan-hydraulics-pt



1.OSB. Erkunt Cad. No: 6 Sincan / ANKARA  
Tel.+90 312 267 39 71-Fax +90 312 267 38 72  
info@kozmaksan.com.tr  
Website: www.kozmaksan.com.tr



ARAC TIPI MITSUBISHI VAKUMLU KONTROL SOL YAN BAĞLANTI

MTS.01.25S5.V

Ürün Kodu

ŞANZIMAN TIPI MO 25 S 5 / 27 S5

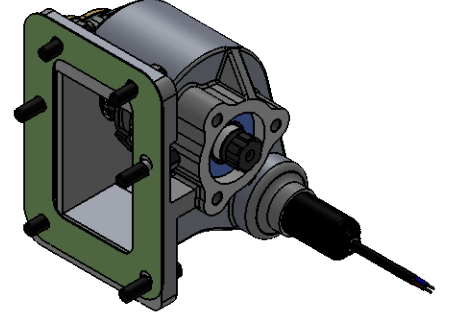
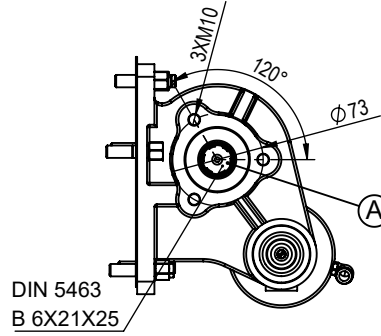
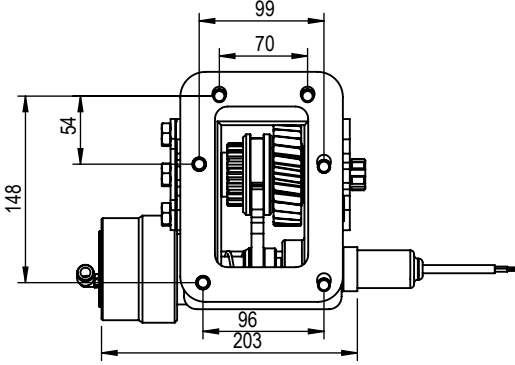
02

15.02.2018

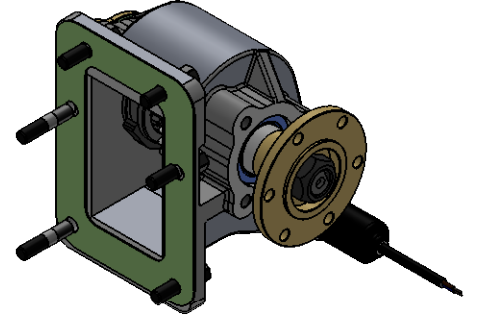
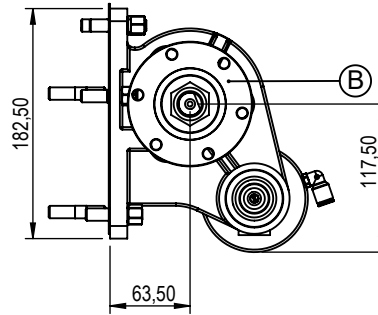
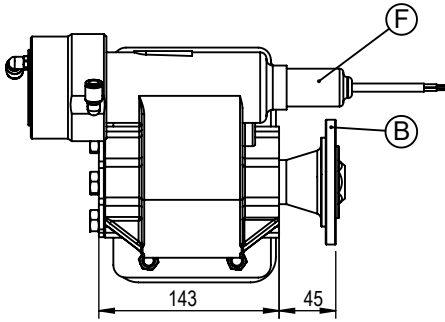
04

Rev.Nu-Tarih  
-Sayfa Nu.

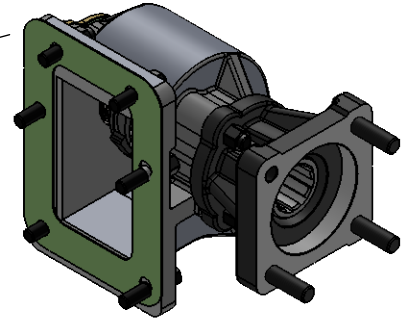
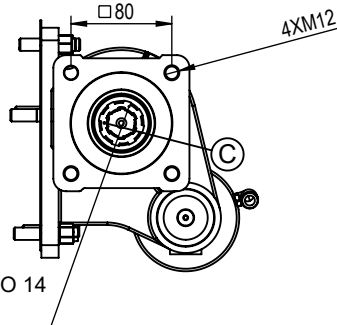
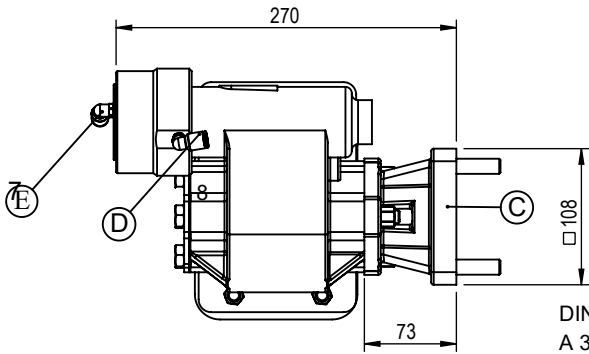
## UNI POMPA ÇIKIŞLI



## FLANŞLI POMPA ÇIKIŞLI



## ISO POMPA ÇIKIŞLI



A DIN 5463 6X21X25 UNI 3 Delikli Bağlantı Çıkışı

B ISO 7647-7646 Standartlarda Kaplin Çıkışı

C ISO 14 - DIN 5462 8X32X36 Bağlantı Çıkışı

D Vakum Girişi R 1/8"

E Vakum Girişi R 1/8" (Opsiyonel-Çift Tesirli)

F Devrede-Devrede Değil Müşiri (Opsiyonel)

	UNI ÇIKIŞ	KAPLIN ÇIKIŞ	ISO ÇIKIŞ
Güç @1000d/dk (kW)	23	36,7	23
Azami Tork (Nm)	220	350	220
Ağırlık (Kg)	6	8	7
Pto İç Oran (i=Zout/Zin)		1/1	
Motordan Pto Oran		1:0,47	
Bağlantı Şekli	Sol Yan		
Dönüş Yönü	Sağ (Saat Yönü)		

- Kozmaksan Şirketi katalogta verilen bilgileri önceden bildirmeden değiştirme hakkını saklı tutar. Bu belge genel bilgiler içerir ve taahhüt ve sözleşme niteliğinde değildir.  
- Verilen güç ve tork bilgileri sadece PTO'ara şanzımana aittir. Uygulama yapılacak şanzıman, motor ve aracın PTO'ara şanzıman için uygun gördüğü değerleri aşmayınız.  
- Şanzımana civata ile bağlanan PTO'lara takılacak pompa, şaft vb. parçaların ağırlık ve askıda kalan uzunlukları şanzıman ve araç üreticisinin onayladığı limitleri geçmemelidir.

KozmaksanPTO

kozmaksanpto

kozmaksan-hydraulics-pt



1.OSB. Erkunt Cad. No: 6 Sincan / ANKARA  
Tel.+90 312 267 39 71-Fax +90 312 267 38 72  
info@kozmaksan.com.tr  
Website: www.kozmaksan.com.tr



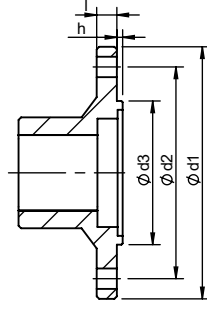
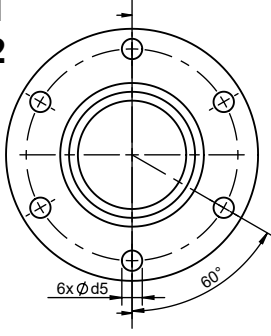
**MTS.01.25S5**

Ürün Kodu

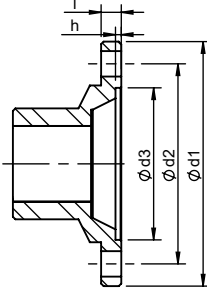
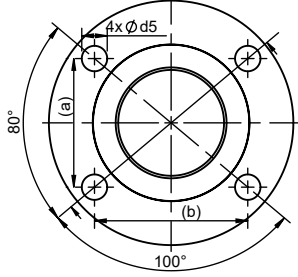
01

15.02.2019

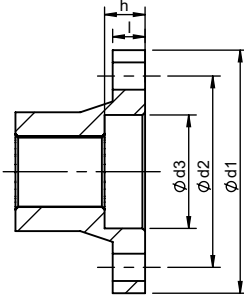
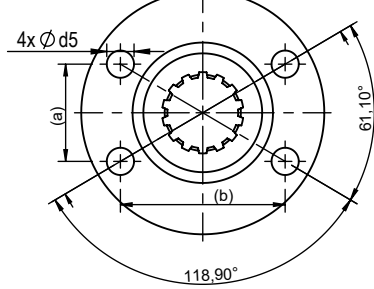
5/5

Rev.Nu-Tarih  
-Sayfa Nu.1.1  
1.2

1.3



1.4

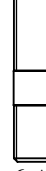


	$\varnothing d1$	$\varnothing d2$	$\varnothing d3$	$\varnothing d5$	l	h	delik sayısı	(a) x (b)
1.1	100	84	57	8,1	8	2,3	6	-
1.2	90	74,5	47	8,1	8	2,3	6	-
1.3	97	79,37	60,32	10,1	8	2,3	4	51 x 60,8
1.4	90	70,83	42	10,1	12	9	4	36 x 61

ölçüler milimetredir

(PTO-Ana Şanzıman bağlantı montaj seti)

5



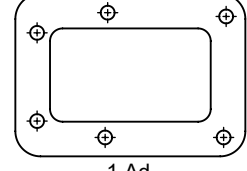
6 Ad.

6



6 Ad.

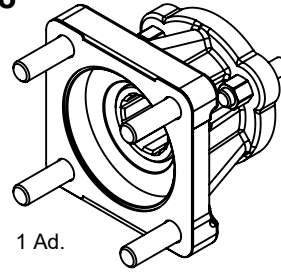
7



1 Ad.

PTO-ISO Pompa Bağlantı Kiti

8



1 Ad.

PTO-UNI Pompa bağlantı montaj seti)

5



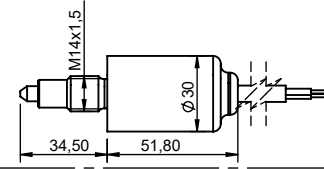
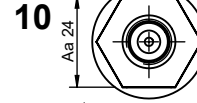
3 Ad.

6

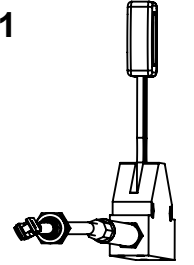


3 Ad.

9



11



No	Ürün Kodu	Ürün Açıklaması	No	Ürün Kodu	Ürün Açıklaması
1.1	C06-083-2	ISO 7646-100x6x8	9	T12-037	NORMALDE AÇIK MÜŞÜR
1.2	C06-083-3	ISO 7646-90x6x8	10	T12-036	NORMALDE KAPALI MÜŞÜR
1.3	C06-083-1	ISO 7647-SAE 1300x4x10	11	KTP50-55.3500	3.5M KONTROL HALATI (TÜM PTO)
1.4	C06-185	Ø90 Özel Kaplin			
5	T07-004	M10x1,5x45mm SAPLAMA			
6	T08-001	M10x1,5 Takviyeli Somun			
7	T04-023	ALIN CONTASI ( 1MM )			
8	AKP.PP.2.52	52 LİK PP AKUPLESİ 3X4			

- Kozmaksan Şirketi katalogta verilen bilgileri önceden bildirmeden değiştirme hakkını saklı tutar. Bu belge genel bilgiler içerir ve taahhüt ve sözleşme niteliğinde değildir.  
- Verilen güç ve tork bilgileri sadece PTO'ara şanzımana aittir. Uygulama yapılacak şanzıman, motor ve aracın PTO'ara şanzıman için uygun gördüğü değerleri aşmayınız.  
- Şanzımana cıvata ile bağlanan PTO'lara takılacak pompa, şaft vb. parçaların ağırlık ve askıda kalan uzunlukları şanzıman ve araç üreticisinin onayladığı limitleri geçmemelidir.

1.OSB. Erkunt Cad. No: 6 Sincan / ANKARA  
Tel.+90 312 267 39 71-Fax +90 312 267 38 72  
info@kozmaksan.com.tr  
Website: www.kozmaksan.com.tr

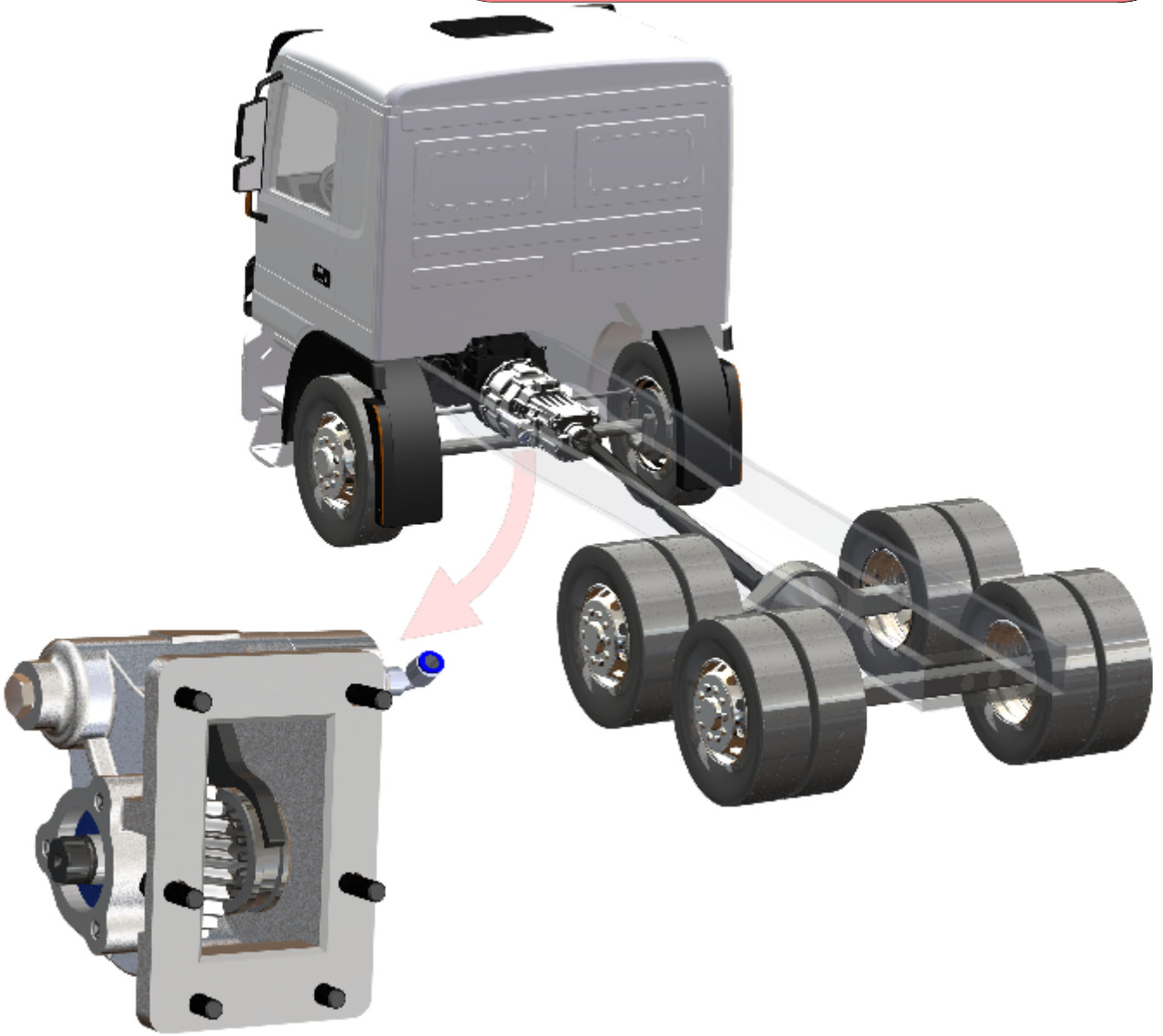


KozmaksanPTO

kozmaksanpto

kozmaksan-hydraulics-pt





**VEHICLE TYPE**

EURO 2 FE85PE / PG / FE 649 - 659 - FE 859 E  
MITSUBISHI / FE150C1-150E1- FE150E2 CANTER 2.0T /  
WIDE CAB FG145C1 4X4 CANTER 2.5T-FE150W1 3.5T-  
150G1 4T-150G2 4.5T (722 -714) HD 65/72 HYUNDAI

**TRANSMISSION TYPE**

MO 35 S 5 (5,38-5,52) / MO 35 T3 / 35 S6

Kozmaksan Mitsubishi Power Take OFFs designed for MITSUBISHI trucks. Kozmaksan Mitsubishi PTOs has Single output model, Side Mounting type option and available for UNI&ISO mounting housing or suitable for flange connections.

Applications;

- Garbage Truck
- Crane Truck
- Dump Truck

Vehicle Type MITSUBISHI PNEUMATIC SIDE MOUNTING

Transmission Type MO 35 S 5 (5,38-5,52) / MO 35 T3 / 35 S6

MTS.01.35S5.H

Product Code

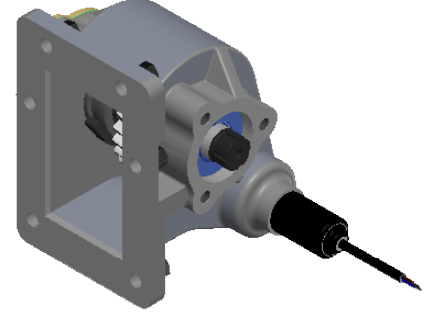
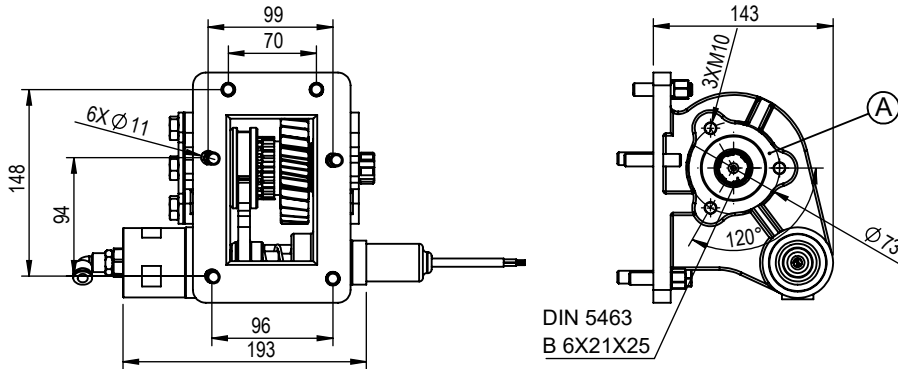
02

15/02/2019

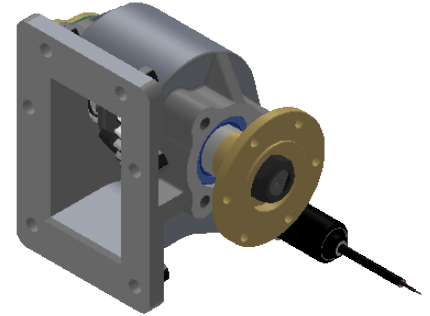
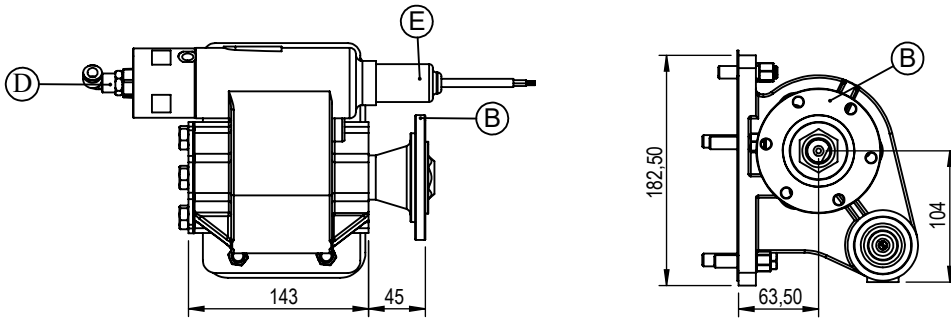
02

Rev. Date

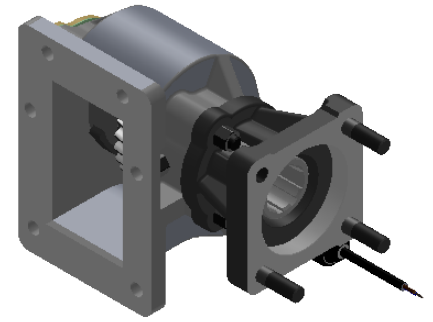
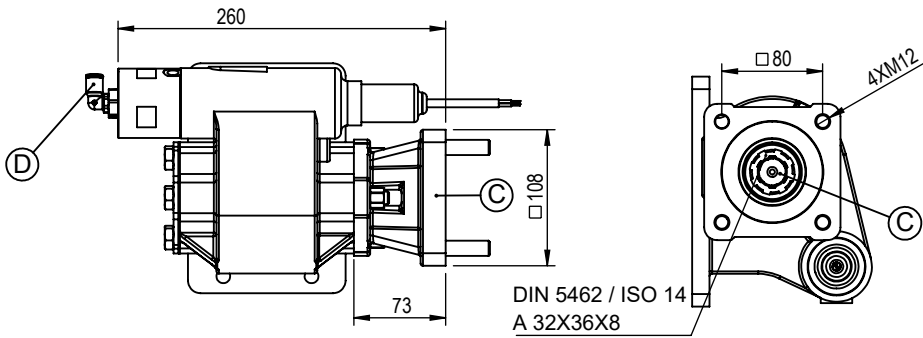
### UNI OUTPUT



### FLANGE OUTPUT



### ISO OUTPUT



A DIN 5463 6X21X25 UNI 3 Delikli Bağlantı Çıkışı

B ISO 7647-7646 Standartlarda Kaplin Çıkışı

C ISO 14 - DIN 5462 8X32X36 Bağlantı Çıkışı

D Hava Girişi R 1/4"

E Devrede-Devrede Değil Müşiri (Opsiyonel)

	UNI Output	FLANGE Output	ISO Output
Power(kW)@1000 RPM	23	36,7	23
Max. Torque (Nm)	220	350	220
Weight (Kg)	6	7	8
Ratio			
Mounting Type	Left Side Mounting		
Sense of Rotation	CW		

- Kozmaksan has all rights to change information in this catalogue without announcing it. This document is representing general information. It is not a contract.  
- All information belongs to only PTO/Split Shaft. Do not use PTO/Split Shaft, if it is not suitable for your engine and main transmission.  
- Pumps, shafts and other parts should not be longer or heavier than approved distance and weight by the manufacturer of main transmission and engine.

KozmaksanPTO

kozmaksanpto

kozmaksan-hydraulics-pto

**KOZANOĞLU**  
**KOZMAKSAN**

1.OSB. Erkunt Cad. No: 6 Sincan / ANKARA  
Tel.+90 312 267 39 71-Fax +90 312 267 38 72  
order@kozmaksan.com.tr  
www.kozmaksan.com.tr



Vehicle Type MITSUBISHI MECHANIC SIDE MOUNTING

Transmission Type MO 35 S 5 (5,38-5,52) / MO 35 T3 / 35 S6

MTS.01.35S5.M

Product Code

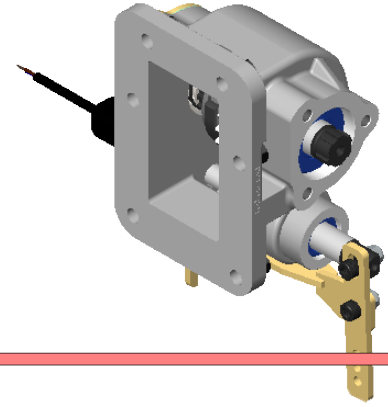
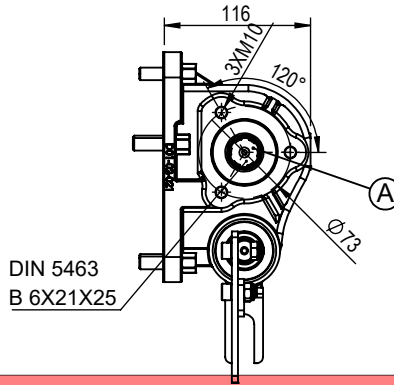
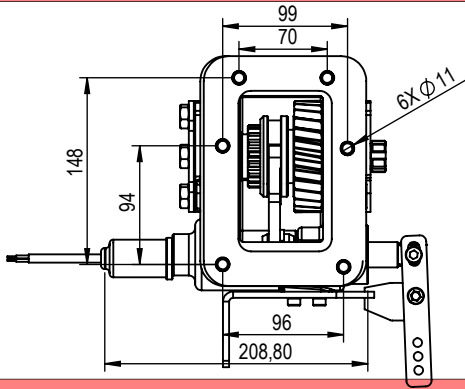
02

27.08.2018

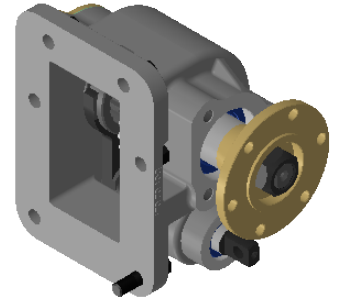
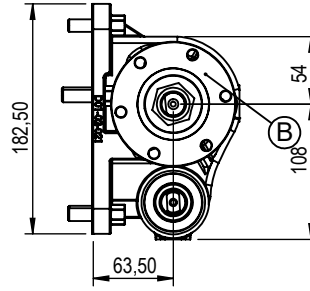
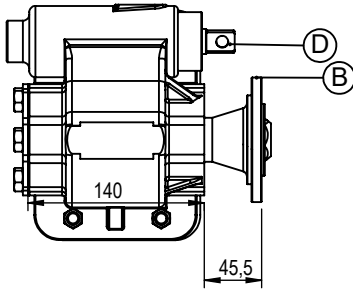
03

Rev. Date

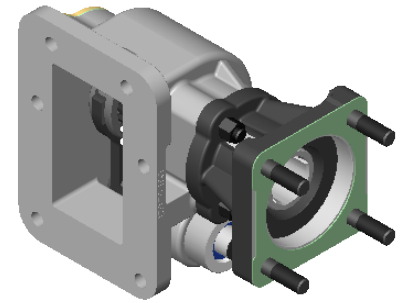
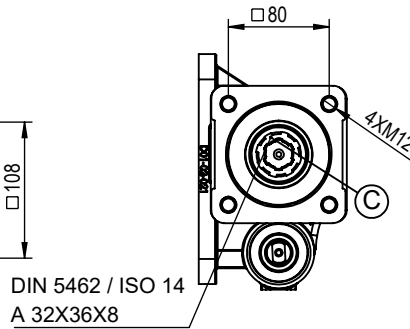
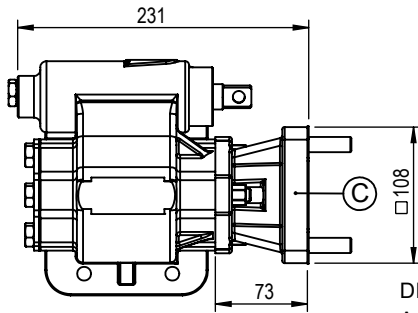
### UNI OUTPUT



### FLANGE OUTPUT



### ISO OUTPUT



**A** DIN 5463 6X21X25 UNI 3 Delikli Bağlantı Çıkışı

**B** ISO 7647-7646 Standartlarda Kaplin Çıkışı

**C** ISO 14 - DIN 5462 8X32X36 Bağlantı Çıkışı

**D** Mekanik Sistem

	UNI Output	FLANGE Output	ISO Output
Power(kW)@1000 RPM	23	36,7	23
Max. Torque (Nm)	220	350	220
Weight (Kg)	6	7	8
Ratio			
Mounting Type	Left Side Mounting		
Sense of Rotation	CW		

- Kozmaksan has all rights to change information in this catalogue without announcing it. This document is representing general information. It is not a contract.  
- All information belongs to only PTO/Split Shaft. Do not use PTO/Split Shaft, if it is not suitable for your engine and main transmission.  
- Pumps, shafts and other parts should not be longer or heavier than approved distance and weight by the manufacturer of main transmission and engine.

KozmaksanPTO

kozmaksanpto

kozmaksan-hydraulics-pto

**KOZANOĞLU**  
**KOZMAKSAN**

1.OSB. Erkunt Cad. No: 6 Sincan / ANKARA  
Tel.+90 312 267 39 71-Fax +90 312 267 38 72  
order@kozmaksan.com.tr  
www.kozmaksan.com.tr



Vehicle Type MITSUBISHI VACUUM CONTROL SIDE MOUNTING

Transmission Type MO 35 S 5 (5,38-5,52) / MO 35 T3 / 35 S6

MTS.01.35S5.V

Product Code

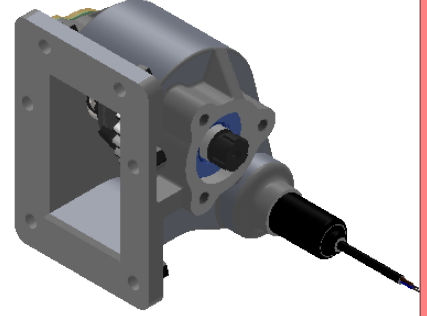
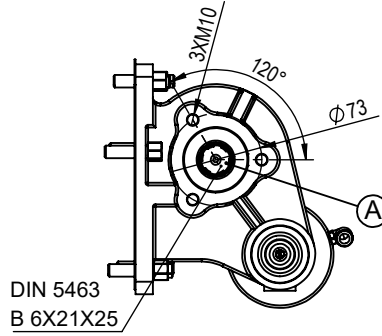
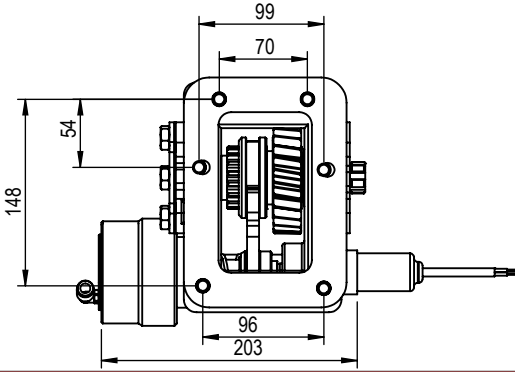
02

15/02/2019

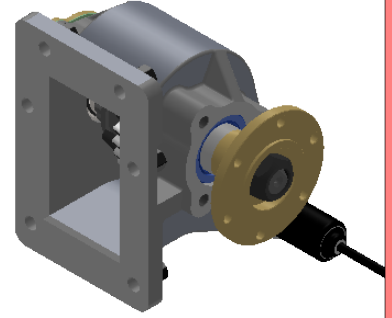
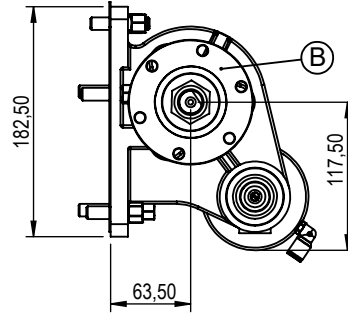
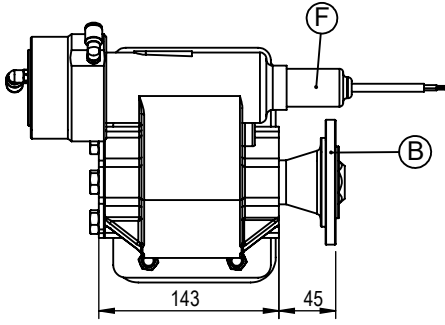
04

Rev. Date

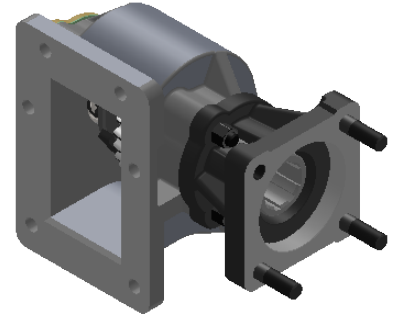
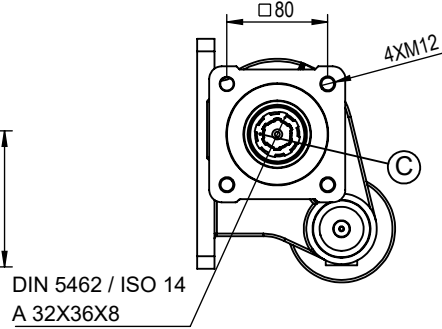
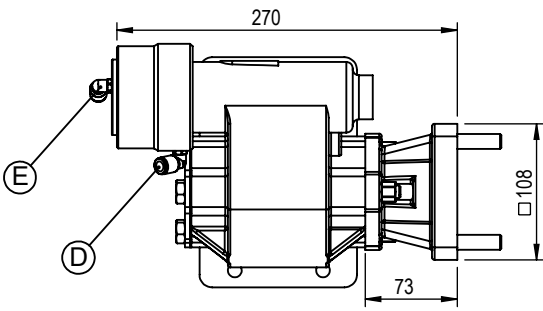
### UNI OUTPUT



### FLANGE OUTPUT



### ISO OUTPUT



A DIN 5463 6X21X25 UNI 3 Delikli Bağlantı Çıkışı

B ISO 7647-7646 Standartlarda Kaplin Çıkışı

C ISO 14 - DIN 5462 8X32X36 Bağlantı Çıkışı

D Vakum Girişi R 1/8"

E Vakum Girişi R 1/8" (Opsiyonel-Çift Tesirli)

F Devrede-Devrede Değil Müşiri (Opsiyonel)

	UNI Output	FLANGE Output	ISO Output
Power(kW)@1000 RPM	23	36,7	23
Max. Torque (Nm)	220	350	220
Weight (Kg)	6	7	8
Ratio			
Mounting Type	Left Side Mounting		
Sense of Rotation	CW		

- Kozmaksan has all rights to change information in this catalogue without announcing it. This document is representing general information. It is not a contract.  
- All information belongs to only PTO/Split Shaft. Do not use PTO/Split Shaft, if it is not suitable for your engine and main transmission.  
- Pumps, shafts and other parts should not be longer or heavier than approved distance and weight by the manufacturer of main transmission and engine.

KozmaksanPTO

kozmaksanpto

kozmaksan-hydraulics-pt

**KOZANOĞLU**  
**KOZMAKSAN**

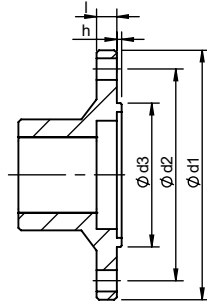
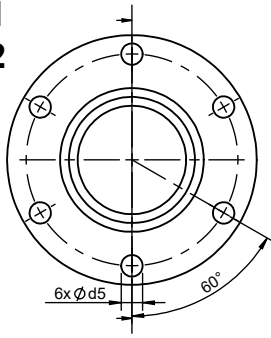
1.OSB. Erkunt Cad. No: 6 Sincan / ANKARA  
Tel.+90 312 267 39 71-Fax +90 312 267 38 72  
order@kozmaksan.com.tr  
www.kozmaksan.com.tr



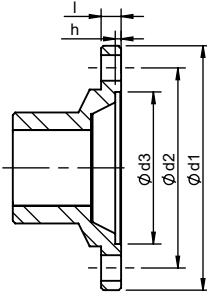
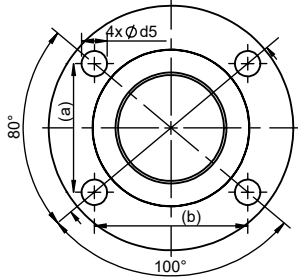


**1.1**

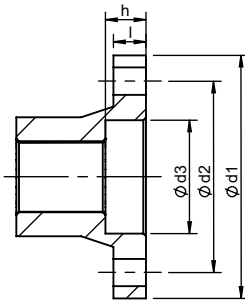
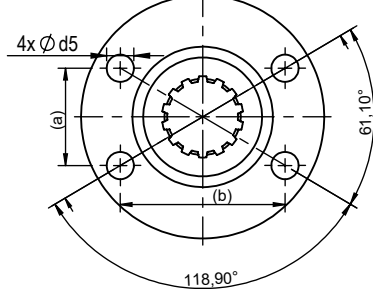
**1.2**



**1.3**



**1.4**

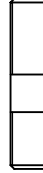


	Ø d1	Ø d2	Ø d3	Ø d5	l	h	Hole	(a) x (b)
1.1	100	84	57	8,1	8	2,3	6	-
1.2	90	74,5	47	8,1	8	2,3	6	-
1.3	97	79,37	60,32	10,1	8	2,3	4	51 x 60,8
1.4	90	70,83	42	10,1	12	9	4	36 x 61

Dimension are mm.

(PTO Mounting Set)

**5**



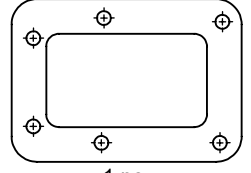
6 pcs

**6**



6 pcs

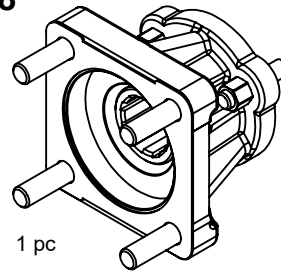
**7**



1 pc.

ISO Adapter

**8**



1 pc

UNI Pump Mounting Set

**5**



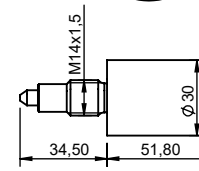
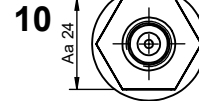
3 pcs

**6**



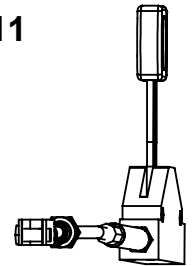
3 pcs

**9**



34,50 51,80

**11**



No	Code	Description	No	Code	Description
1.1	C06-083-2	ISO 7646-100x6x8	9	T12-037	Normally Open
1.2	C06-083-3	ISO 7646-90x6x8	10	T12-036	Normally Closed
1.3	C06-083-1	ISO 7647-SAE 1300x4x10	11	KTP50-55.3500	3.5 MT Control Cable and Lever
1.4	C06-185	Ø90 Flange			
5	T07-004	M10x1,5x45 mm Stud			
6	T08-001	M10x1,5 Nut			
7	T04-023	Gasket 1 mm			
8	AKP.PP.2.52	ISO Adapter			

- Kozmaksan has all rights to change information in this catalogue without announcing it. This document is representing general information. It is not a contract.  
- All information belongs to only PTO/Split Shaft. Do not use PTO/Split Shaft, if it is not suitable for your engine and main transmission.  
- Pumps, shafts and other parts should not be longer or heavier than approved distance and weight by the manufacturer of main transmission and engine.

KozmaksanPTO

kozmaksanpto

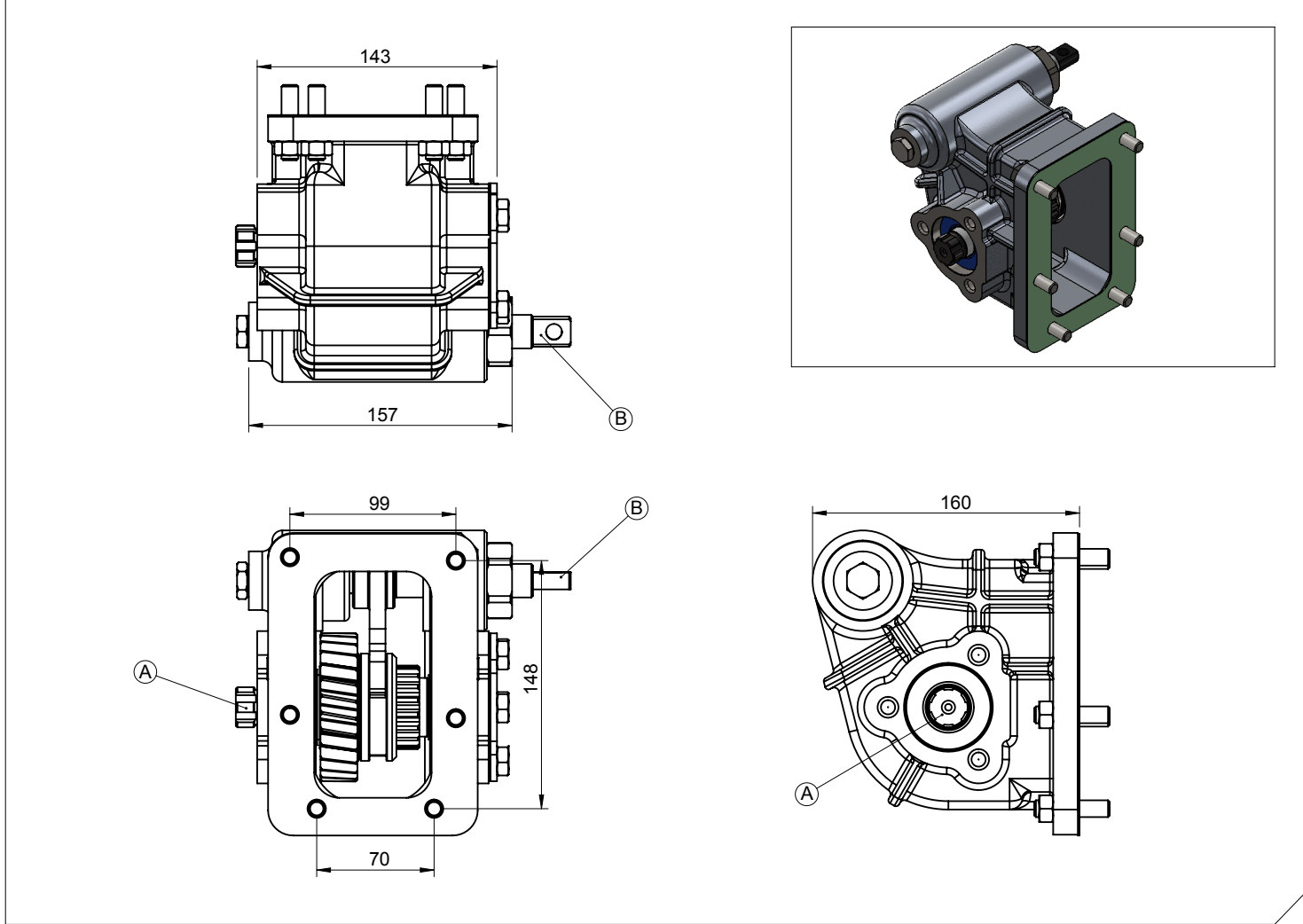
kozmaksan-hydraulics-pt

<b>Araç Tipi</b> Vehicle Type	FE 859 G / EURO 4 FE85BE / FE85BG / 7C15
<b>Şanzıman Tipi</b> Gearbox Type	MO 36 S 6 (5,400) / 36 S 5 / 36 A 6

Ürün Kodu / Product Code  
**MTS.01.36S6M.KF**



### Ürün Görünümleri / Products View



### Opsiyonlar / Options

A : PTO Çıkışı (Standart DIN 5463 6X21X25 UNI 3 Delikli)  
Pistonlu pompaya akuple (4 delikli ISO bağlantı)  
Kaplinli (flaşlı bağlantı)  
B : Mekanik Kontrol

A : PTO Output (Standard DIN 5463 6X21X25 UNI 3 Bolt)  
Direct mounting ISO 4 bolt mtg. adapter  
Drive flange  
B : Mechanic Control

### Teknik Bilgi / Technical Data

Güç / Power (Kw)	Maksimum Tork / Maximum Torque		Çevrim Oranı Ratio	Bağlantı Şekli Mounting Side	Kumanda Kontrol Control Type
	Nm	Kgm			
1000 Dev. / Dak.				SOL YAN/LEFT SIDE	MEKANİK/MECHANIC
23.3	223	22.8	1/1	Ağırlık / Weight (Kg)	Dönüş Yönü / Rotation Sense
				6	SAĞ/CLOCKWISE(CW)

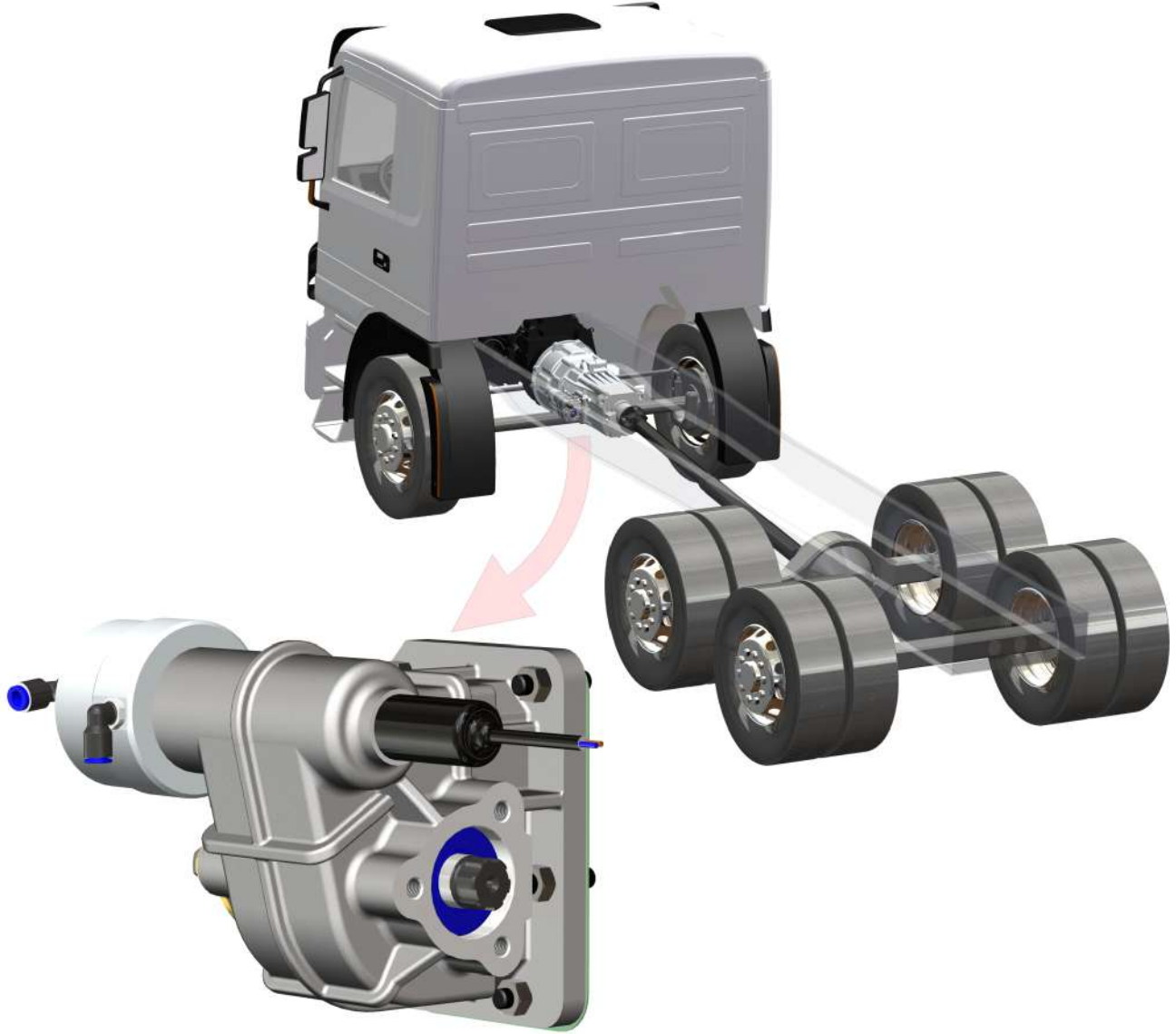


**KOZANOĞLU**  
**KOZMAKSAN**

HYDRAULIC PUMPS & POWER TAKE-OFFS MANUFACTURING LIMITED CO.  
HİDROLİK POMPA ve ARA ŞANZIMAN PTO İMALAT SAN.LTD.ŞTİ.

Ofis / Office  
Tel. +90 312 354 05 39  
Fax +90 312 354 34 59  
7. Sokak No: 9  
Ostim / ANKARA  
e-mail: [info@kozmaksan.com.tr](mailto:info@kozmaksan.com.tr)

Fabrika / Factory  
Tel. +90 312 267 39 71  
Fax +90 312 267 38 72  
AOS. 1. OSB. Erkunt Cad. No: 6  
Sincan / ANKARA  
Website: [www.kozmaksan.com.tr](http://www.kozmaksan.com.tr)



**VEHICLE TYPE**

TF A35 / TF A35L / TF B35 / TF B75 / TF B75L CANTER  
MITSUBISHI / 515 / 516 / 715 / 815 CANTER - CANTER 616-  
FEC60T1-65T1 / FEA21BL4SA21 / FE21EL4SA21 /  
FEB21CL4SA22 / FEB91EL4SA23 / FEB91EL4SA27 /  
FEB91GL4SA23 / FEA21EL4SA25 / FEB91EL4SA29

**TRANSMISSION TYPE**

MO 38 S 5 ( 5,494 ) MT - 5 VİTES DÜZ MANUEL ŞANZIMAN

Kozmaksan Mitsubishi Power Take OFFs designed for MITSUBISHI trucks. Kozmaksan Mitsubishi PTOs has Single output model, Side Mounting type option and available for UNI&ISO mounting housing or suitable for flange connections.

Applications;

- Garbage Truck
- Crane Truck
- Dump Truck

Vehicle Type

MITSUBISHI

VACUUM CONTROL

SIDE MOUNTING

Transmission Type

TF A35 / TF A35L / TF B35 / TF B75 / TF B75L CANTER MITSUBISHI / 515 / 516 / 715 / 815 CANTER - CANTER 616- FEC60T1-65T1 / FEA21BL4SA21 / FE21EL4SA21 / FEB21CL4SA22 / FEB91EL4SA23 / FEB91EL4SA27 / FEB91GL4SA23 / FEA21EL4SA25 / FEB91EL4SA29

MTS.01.38S5.V.CT

Product Code

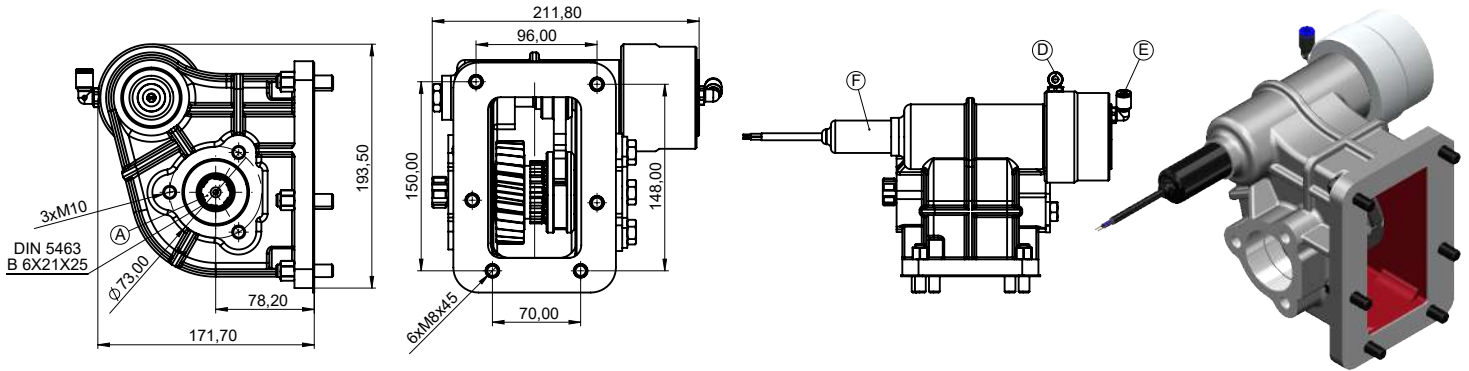
01

15.01.2019

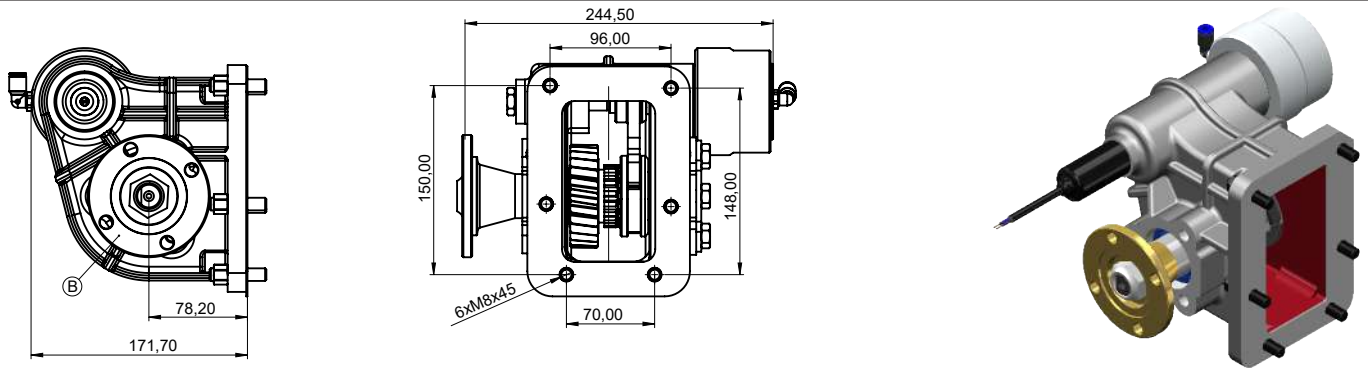
2/3

Rev. Date

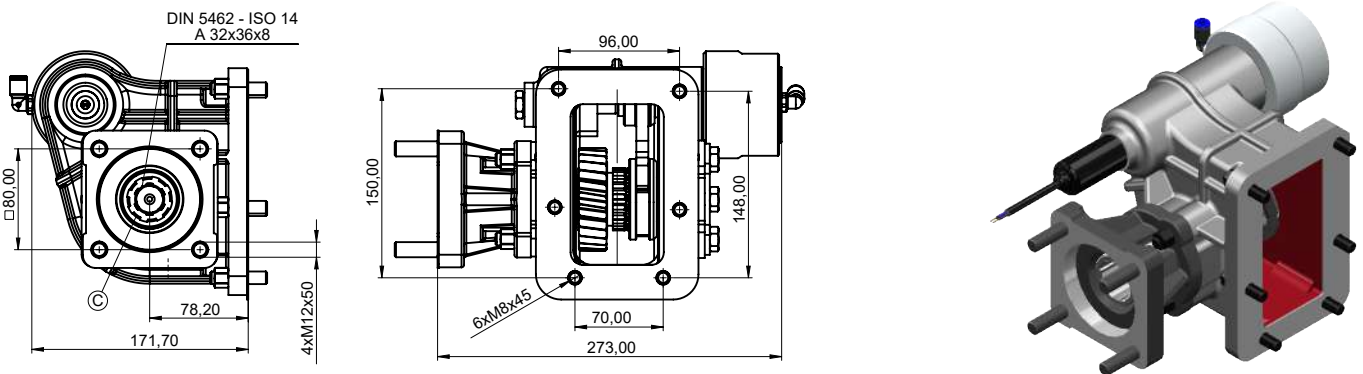
## UNI OUTPUT



## FLANGE OUTPUT



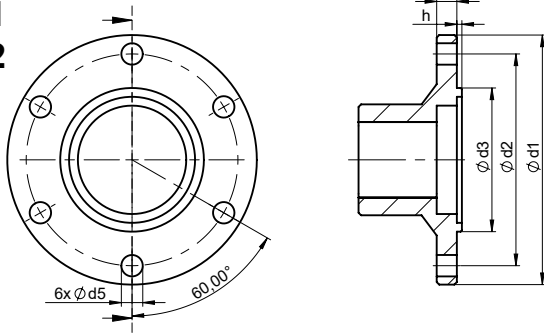
## ISO OUTPUT



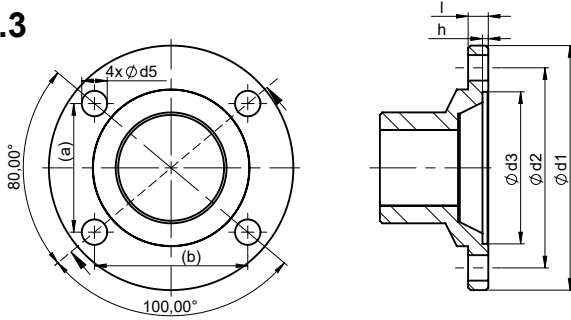
A	DIN 5463 B 6x21x25 UNI 3 Bolts Output
B	ISO 7647-7646 Standartlard Flange Output
C	ISO 14 - DIN 5462 A 8x32x36 ISO 4 Bolts Output
D	Vacuum Input R 1/8" (Engage)
E	Vacuum Input R 1/8" (Disengage)
F	Sensor (Engage-Disengage) Opt.

	UNI Output	FLANGE Output	ISO Output
Power(kW)@1000 RPM	23	36,7	23
Max. Torque (Nm)	220	350	220
Weight (Kg)	6,5 kg	7,5 kg	8 kg
Ratio			
Mounting Type	Left Side Mounting		
Sense of Rotation	CW		

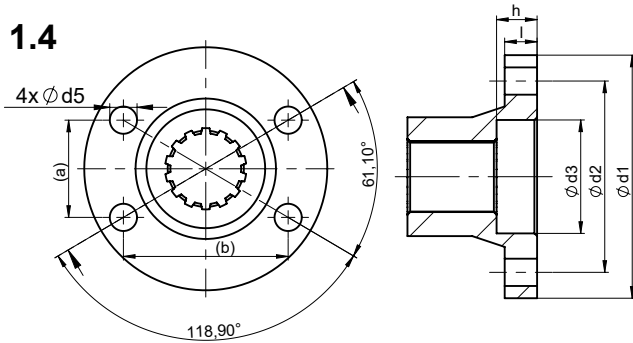
1.1  
1.2



1.3

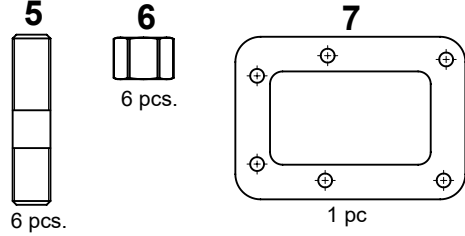


1.4

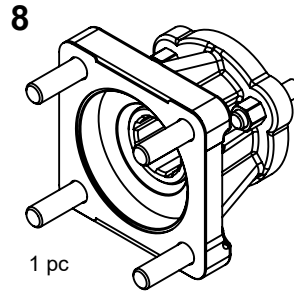


	∅ d1	∅ d2	∅ d3	∅ d5	l	h	Hole	(a) x (b)
1.1	100	84	57	8,1	8	2,3	6	-
1.2	90	74,5	47	8,1	8	2,3	6	-
1.3	97	79,37	60,32	10,1	8	2,3	4	51 x 60,8
1.4	90	70,83	42	10,1	12	9	4	36 x 61

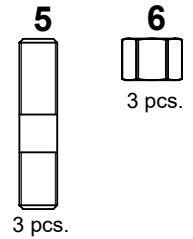
(PTO-Transmission Assembling Set)



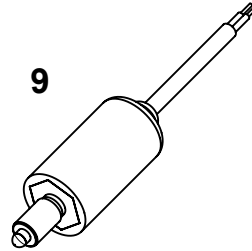
(PTO-ISO Adapter Kit)



PTO-UNI Pump Connection Parts)



9

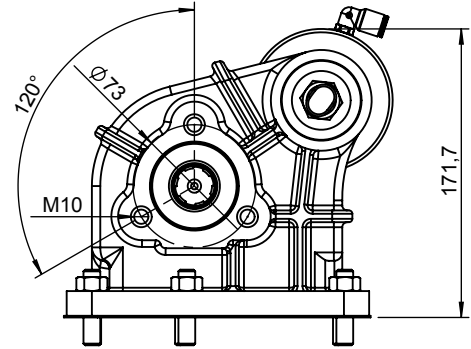
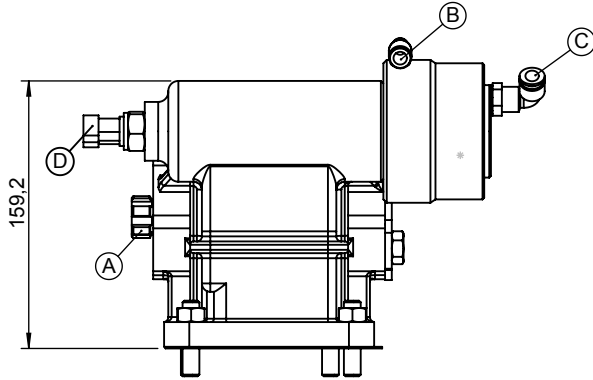
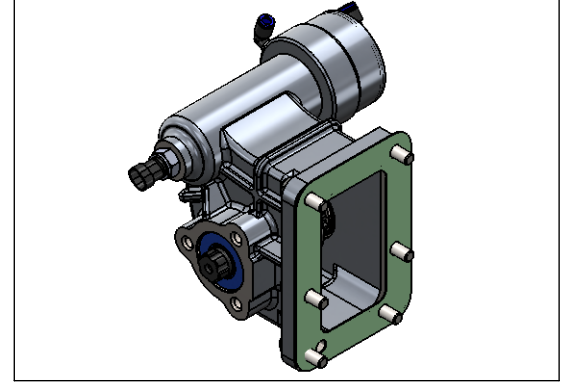
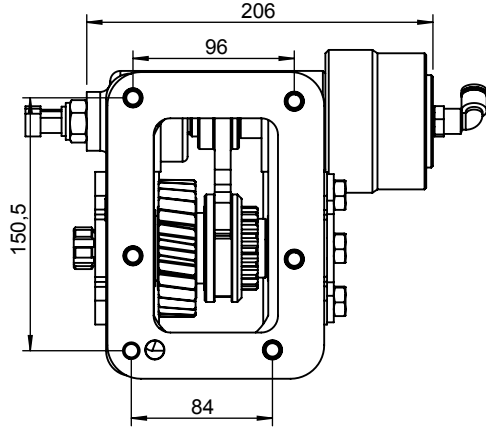


No	Code	Description	No	Code	Description
1.1	C06-083-2	ISO 7646-100x6x8 Flange	9	T12-029	Engage/Disengage Sensor
1.2	C06-083-3	ISO 7646-90x6x8 Flange			
1.3	C06-083-1	ISO 7647-1300x4x10 Flange			
1.4	C06-185	Ø90 Flange			
5	T07-004	M10x1,5x45mm Stud			
6	T08-001	M10x1,5 Nut			
7	T04-023	Gasket 1 mm			
8	AKP.PP.2.52	UNI-ISO Adapter			

<b>Araç Tipi</b> Vehicle Type	EURO 5 TF A35L DUONIC / TF B35 DUONIC / TF B75 DUONIC / TF B75L DUONIC / 3C13 / 7C15 / 6C18 / FE 125 / FEC52S / FG 4X4 / FGB72S / FE 160 / FEC72S / FEC72W / FE 180 / FEC92S / 515 / 516 / 715 / 815 CANTER CANTER 516-2.0TFEA45C2/2471-MIT-Canter-2.0T-FEB45C2E2n2/4.0TFEW60-75E2/4.5TFEW82G2/2.0TFEW45E2 CANTER 413 / CANTER 515 / CANTER 615 / CANTER 715 / CANTER 815 / CANTER 918 / B35L / B75L EURO 5 FEA21EL3SA21 / FEB21CL3SA22 / FEB91EL3SA23 / FEB91GL3SA23 / FEB91EL3SA29
<b>Şanzıman Tipi</b> Gearbox Type	MO 38 S 6 ( 5,397 ) AMT DUONIC - 6 VİTES OTOMATİK ŞANZIMAN

<b>Ürün Kodu / Product Code</b>	<b>MTS.01.38S6V.CT.KF</b>
---------------------------------	---------------------------

### Ürün Görünümleri / Products View



### Opsiyonlar / Options

A : PTO Çıkışı (Standart DIN 5463 6X21X25 UNI 3 Delikli)  
Pistonlu pompaya akuple (4 delikli ISO bağlantı)  
Kaplınli (flanşlı bağlantı)  
B : Vakum Sistemi Devreye Alma (R 1/8")  
C : Vakum Sistemi Devreden Çıkarma (R 1/4")  
D : Müşir

A : PTO Output (Standard DIN 5463 6X21X25 UNI 3 Bolt)  
Direct mounting ISO 4 bolt mtg. adapter  
Drive flange  
B : Vacuum System Engage (R 1/8")  
C : Vacuum System Disengage (R 1/4")  
D : Sensor

### Teknik Bilgi / Technical Data

Güç / Power (Kw)	Maksimum Tork / Maximum Torque		Çevrim Oranı Ratio	Bağlantı Şekli Mounting Side	Kumanda Kontrol Control Type
	Nm	Kgm			
1000 Dev. / Dak.				SOL YAN/LEFT SIDE	VAKUMLU/VACUUM
21,8	208	23	1/1	Ağırlık / Weight (Kg)	Dönüş Yönü / Rotation Sense
				6	SAĞ/CLOCKWISE(CW)



**KOZANOĞLU**  
**KOZMAKSAN**

Hidrolik Pompa ve Ara Şanzıman P.T.O. İmalat San. ve Tic. Ltd. Şti.  
Hydraulic Pumps & Power Take-Offs Manufacturing Limited Co.

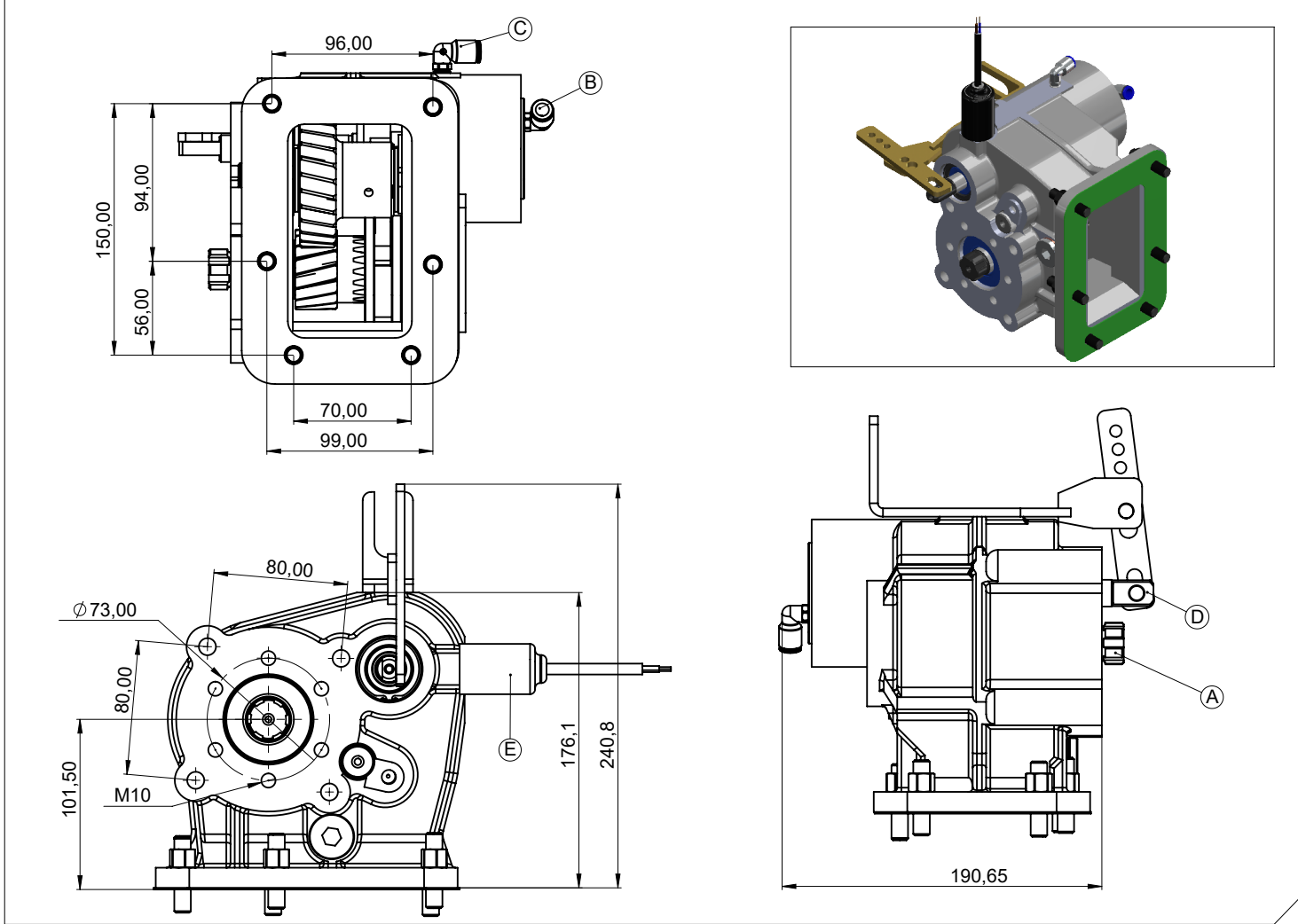
**Ofis / Office**  
Tel. +90 312 354 05 39  
Fax +90 312 354 34 59  
7. Sokak No: 9  
Ostim / ANKARA  
e-mail: [info@kozmaksan.com.tr](mailto:info@kozmaksan.com.tr)

**Fabrika / Factory**  
Tel. +90 312 267 39 71  
Fax +90 312 267 38 72  
AOS. 1. OSB. Erkunt Cad. No: 6  
Sincan / ANKARA  
Website: [www.kozmaksan.com.tr](http://www.kozmaksan.com.tr)

<b>Araç Tipi</b> Vehicle Type	EURO 5 TF A35L DUONIC / TF B35 DUONIC / TF B75 DUONIC / TF B75L DUONIC / 3C13 / 7C15 / 6C18 / FE 125 / FEC52S / FG 4X4 / FGB72S / FE 160 / FEC72S / FEC72W / FE 180 / FEC92S / 515 / 516 / 715 / 815 CANTER / CANTER 516-2.0T/FEA45C2/2471-MIT-Canter-2.0T-FEB45C2E2n2/4.0TFEW60-75E2/4.5TFEW82G2/2.0TFEW45E2 CANTER 413 / CANTER 515 / CANTER 615 / CANTER 715 / CANTER 815 / CANTER 918 / B35L / B75L EURO 5 FEA21EL3SA21 / FEB21CL3SA22 / FEB91EL3SA23 / FEB91GL3SA23 / FEB91EL3SA29
<b>Şanzıman Tipi</b> Transmission Type	MO 28 S 5

<b>Ürün Kodu / Product Code</b>	<b>MTS.03.28S5.V.M.H.KF</b>
<b>Revizyon No-Tarih / Revision No- Date</b>	<b>15 / 15.10.2019</b>

### Ürün Görünümleri / Products View



### Opsiyonlar / Options

A : PTO Çıkışı (Standart DIN 5463 6X21X25 UNI 3 Delikli)  
Pistonlu pompaya akuple (4 delikli ISO bağlantı)  
Kaplınli (flanşlı bağlantı)  
B : Hava Girişi Devreye Alma (R 1/8")  
C : Hava Girişi Devreden Çıkarma (R 1/8")  
D : Mekanik Kontrol  
E : Devrede -Devrede Değil Müşiri(Ops.)

A : PTO Output (Standard DIN 5463 6X21X25 UNI 3 Bolt)  
Direct mounting ISO 4 bolt mtg. adapter  
Drive flange  
B : Air Inlet Engage (R 1/8")  
C : Air Inlet Disgagge (R 1/8")  
D : Mechanic Control  
E : Engage-Disengage Sensor(Ops.)

### Teknik Bilgi / Technical Data

Güç / Power (Kw)	Maksimum Tork / Maximum Torque		PTO Çevrim Oranı PTO Ratio Giriş / Çıkış	Bağlantı Şekli Mounting Side	Kontrol Tipi Control Type
	Nm	Kgm			
1000 Dev. / Dak.					VAKUMLU-VACUUM HAVALI-PNEUMATIC MEKANİK-MECHANIC
23	219	22	1/1,52	SOL YAN/LEFT SIDE	Dönüş Yönü /Sense of Rotation
				Ağırlık / Weight (Kg)	SOL /COUNTERCLOCKWISE
				7	



**KOZANOĞLU**  
**KOZMAKSAN**

Hidrolik Pompa ve Ara Şanzıman P.T.O. İmalat San. ve Tic. Ltd. Şti.  
Hydraulic Pumps & Power Take-Offs Manufacturing Limited Co.

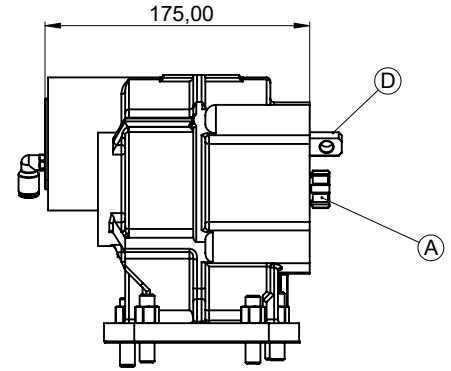
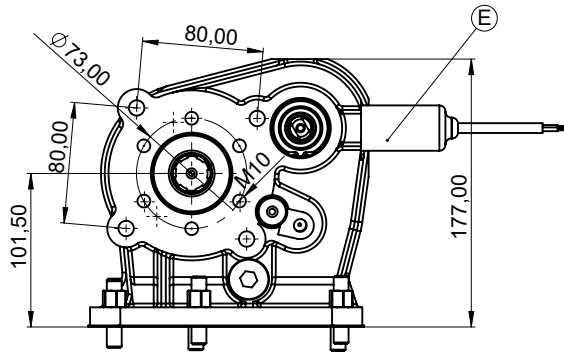
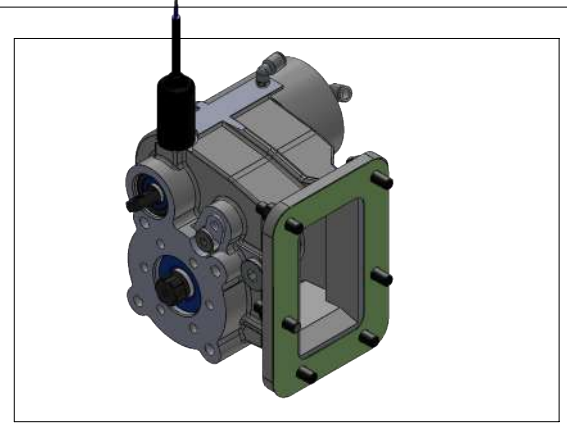
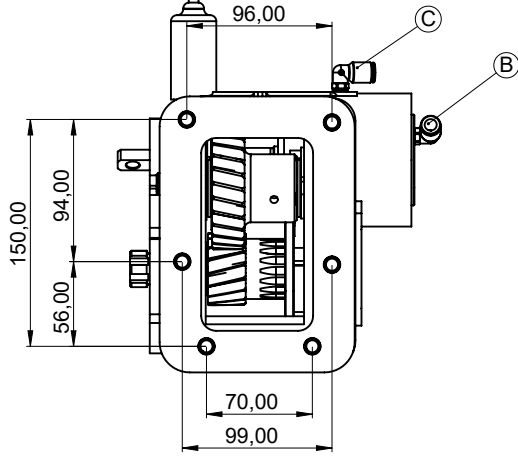
**Ofis / Office**  
Tel. +90 312 354 05 39  
Fax +90 312 354 34 59  
7. Sokak No: 9  
Ostim / ANKARA  
e-mail: [info@kozmaksan.com.tr](mailto:info@kozmaksan.com.tr)

**Fabrika / Factory**  
Tel. +90 312 267 39 71  
Fax +90 312 267 38 72  
AOS. 1. OSB. Erkunt Cad. No: 6  
Sincan / ANKARA  
Website: [www.kozmaksan.com.tr](http://www.kozmaksan.com.tr)

<b>Araç Tipi</b> Vehicle Type	TF A35 / TF A35L / TF B35 / TF B75 / TF B75L CANTER MITSUBISHI / 515 / 516/ 715 / 815 CANTER X CANTER 616-FEC60T1-65T1 / FEA21BL4SA21 / FE21EL4SA21/ FEB21CL4SA22 / FEB91EL4SA23 / FEB91EL4SA27 FEB91GL4SA23 / FEA21EL4SA25/FEB91EL4SA29 / EURO 5
<b>Şanzıman Tipi</b> Transmission Type	MO 38 S 5 ( 5,494 ) MT - 5 VİTES DÜZ MANUEL ŞANZIMAN

<b>Ürün Kodu / Product Code</b>	<b>MTS.03.38S5.V.M.H.KF</b>
<b>Revizyon No-Tarih / Revision No- Date</b>	<b>01/24.04.2018</b>

### Ürün Görünümleri / Products View



### Opsiyonlar / Options

A : PTO Çıkışı (Standart DIN 5463 6X21X25 UNI 3 Delikli)  
Pistonlu pompaya akuple (4 delikli ISO bağlantı)  
Kaplınli (flanşlı bağlantı)  
B : Hava Girişi Devreye Alma (R 1/8")  
C : Hava Girişi Devreden Çıkarma (R 1/8")  
D : Mekanik Kontrol  
E : Devrede -Devrede Değil Müşiri(Ops.)

A : PTO Output (Standard DIN 5463 6X21X25 UNI 3 Bolt)  
Direct mounting ISO 4 bolt mtg. adapter  
Drive flange  
B : Air Inlet Engage (R 1/8")  
C : Air Inlet Disgage (R 1/8")  
D : Mechanic Control  
E : Engage-Disengage Sensor(Ops.)

### Teknik Bilgi / Technical Data

Güç / Power (Kw)	Maksimum Tork / Maximum Torque		Çevrim Oranı Ratio	Bağlantı Şekli Mounting Side	Kontrol Tipi Control Type
	Nm	Kgm			
1000 Dev. / Dak.					
15	148	15	1/1.85	SOL YAN/LEFT SIDE	VAKUMLU-VACUUM HAVALI-PNEUMATIC MEKANİK-MECHANIC
				<b>Ağırlık / Weight (Kg)</b>	<b>Dönüş Yönü /Sense of Rotation</b>
				7	SOL /COUNTERCLOCKWISE



**KOZANOĞLU**  
**KOZMAKSAN**

Hidrolik Pompa ve Ara Şanzıman P.T.O. İmalat San. ve Tic. Ltd. Şti.  
Hydraulic Pumps & Power Take-Offs Manufacturing Limited Co.

**Ofis / Office**  
Tel. +90 312 354 05 39  
Fax +90 312 354 34 59  
7. Sokak No: 9  
Ostim / ANKARA  
e-mail: [info@kozmaksan.com.tr](mailto:info@kozmaksan.com.tr)

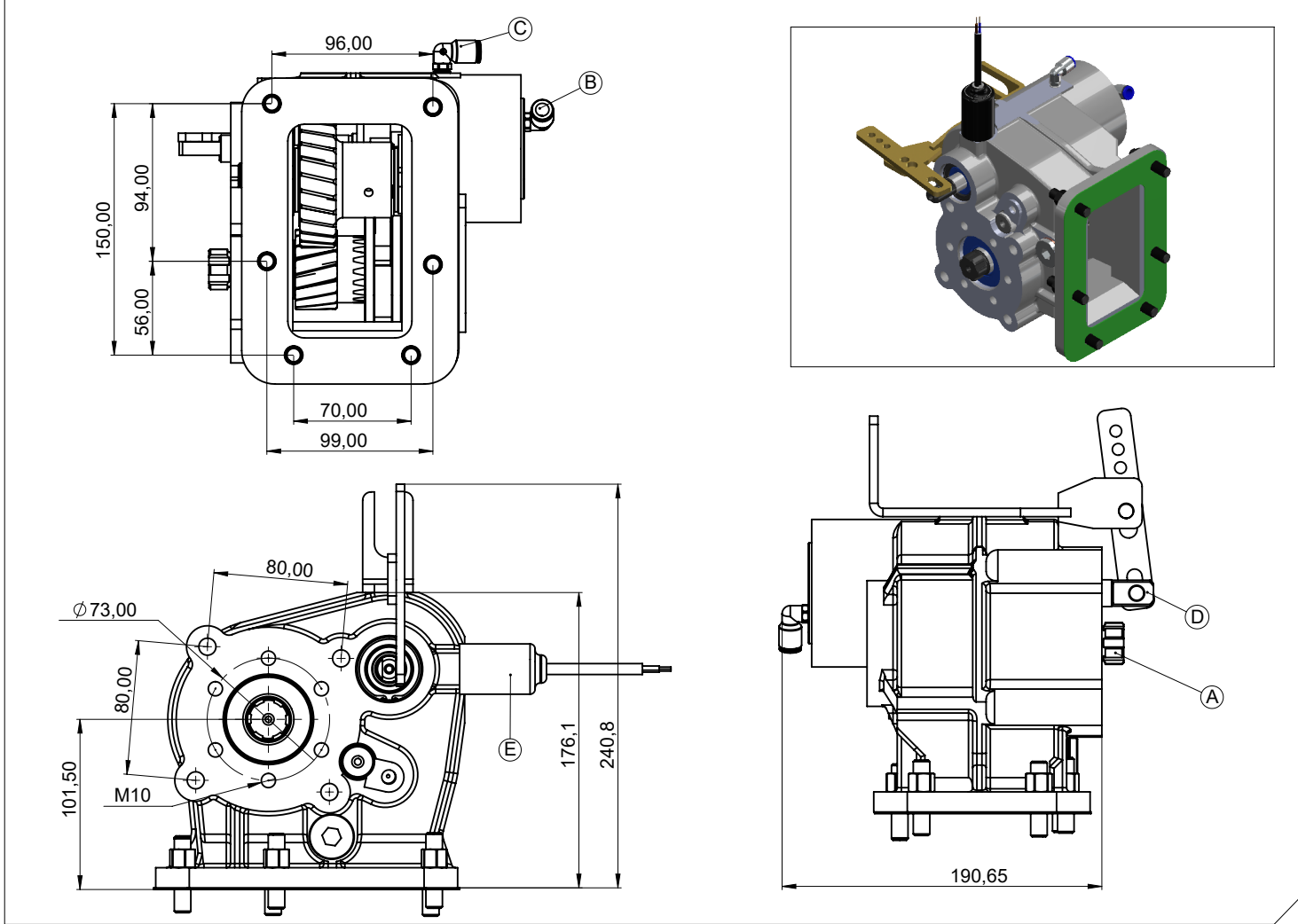
**Fabrika / Factory**  
Tel. +90 312 267 39 71  
Fax +90 312 267 38 72  
AOS. 1. OSB. Erkunt Cad. No: 6  
Sincan / ANKARA  
Website: [www.kozmaksan.com.tr](http://www.kozmaksan.com.tr)



<b>Araç Tipi</b> Vehicle Type	EURO 5 TF A35L DUONIC / TF B35 DUONIC / TF B75 DUONIC / TF B75L DUONIC / 3C13 / 7C15 / 6C18 / FE 125 / FEC52S / FG 4X4 / FGB72S / FE 160 / FEC72S / FEC72W / FE 180 / FEC92S / 515 / 516 / 715 / 815 CANTER / CANTER 516-2.0T/FEA45C2/2471-MIT-Canter-2.0T-FEB45C2E2n2/4.0TFEW60-75E2/4.5TFEW82G2/2.0TFEW45E2 CANTER 413 / CANTER 515 / CANTER 615 / CANTER 715 / CANTER 815 / CANTER 918 / B35L / B75L EURO 5 FEA21EL3SA21 / FEB21CL3SA22 / FEB91EL3SA23 / FEB91GL3SA23 / FEB91EL3SA29
<b>Şanzıman Tipi</b> Transmission Type	MO 38 S 6 ( 5,397 ) AMT DUONIC - 6 VİTES OTOMATİK ŞANZIMAN

<b>Ürün Kodu / Product Code</b>	<b>MTS.03.38S6.V.M.H.KF</b>
<b>Revizyon No-Tarih / Revision No- Date</b>	<b>15 / 15.10.2019</b>

### Ürün Görünümleri / Products View



### Opsiyonlar / Options

A : PTO Çıkışı (Standart DIN 5463 6X21X25 UNI 3 Delikli)  
Pistonlu pompaya akuple (4 delikli ISO bağlantı)  
Kaplinli (flanşlı bağlantı)  
B : Hava Girişi Devreye Alma (R 1/8")  
C : Hava Girişi Devreden Çıkarma (R 1/8")  
D : Mekanik Kontrol  
E : Devrede -Devrede Değil Müşiri(Ops.)

A : PTO Output (Standard DIN 5463 6X21X25 UNI 3 Bolt)  
Direct mounting ISO 4 bolt mtg. adapter  
Drive flange  
B : Air Inlet Engage (R 1/8")  
C : Air Inlet Disengage (R 1/8")  
D : Mechanic Control  
E : Engage-Disengage Sensor(Ops.)

### Teknik Bilgi / Technical Data

Güç / Power (Kw)	Maksimum Tork / Maximum Torque		PTO Çevrim Oranı PTO Ratio Giriş / Çıkış	Bağlantı Şekli Mounting Side	Kontrol Tipi Control Type
	Nm	Kgm			
1000 Dev. / Dak.					
23	219	22	1/1,52	SOL YAN/LEFT SIDE	VAKUMLU-VACUUM HAVALI-PNEUMATIC MEKANİK-MECHANIC
				<b>Ağırlık / Weight (Kg)</b>	<b>Dönüş Yönü /Sense of Rotation</b>
				7	SOL /COUNTERCLOCKWISE



**KOZANOĞLU**  
**KOZMAKSAN**

Hidrolik Pompa ve Ara Şanzıman P.T.O. İmalat San. ve Tic. Ltd. Şti.  
Hydraulic Pumps & Power Take-Offs Manufacturing Limited Co.

**Ofis / Office**  
Tel. +90 312 354 05 39  
Fax +90 312 354 34 59  
7. Sokak No: 9  
Ostim / ANKARA  
e-mail: [info@kozmaksan.com.tr](mailto:info@kozmaksan.com.tr)

**Fabrika / Factory**  
Tel. +90 312 267 39 71  
Fax +90 312 267 38 72  
AOS. 1. OSB. Erkunt Cad. No: 6  
Sincan / ANKARA  
Website: [www.kozmaksan.com.tr](http://www.kozmaksan.com.tr)